



*Shepherd Boats*

NIAGARA-ON-THE-LAKE  
ONTARIO, CANADA

*Pride of Ownership*

*Incomparable - Dependability*



**CANADIAN PIONEERS VEE-DRIVE ENGINES**

**LEVEL OF SOUND**

With engines as far from you as possible:  
Resulting in no over head sound reflections.  
Quietest motor boats possible.

**MORE SPACE**

Using the least desirable part of the boat for  
engines. Leaving widest and best part for  
travel comfort—30% more floor space is made  
available.

**ACCESSIBILITY**

Engines are accessible at all times without  
inconvenience to you or your guests. Servicing  
is less costly and quicker as engines can  
be hoisted right out of the boat and work  
done in the shop.

**GREATER BOW BUOYANCY**

A better sea boat due to the centre of gravity  
being far aft, are much drier as they rise to  
the seas more readily.

## 27 FOOT SPORTSTER - MODEL 150

*Dawson's  
Kennel*



NEW SHEPHERD SPORTSTER SPEEDS TO 35 M.P.H.

### SPECIFICATIONS

BEAM	9' 4"
FREEBOARD—Fore and Aft	46"—34"
BOTTOM—Double 1/2" Planked Mahogany	1"
SIDES—Batten-seamed Mahogany	5/8"
FUEL CAPACITY—Imperial Gallons	60
HEADROOM	6' 2"
SLEEPING CAPACITY	2 to 4
SEATING CAPACITY	10

### STANDARD EQUIPMENT

**ENGINES**—2 Vee Drives with Reduction Hydraulic Control.  
**WINDSHIELD**—Full Vision, Moulded.  
**UPHOLSTERY**—Tolex.  
**FLOOR COVERING**—Linoleum.  
**SEAT CUSHIONS**—Dunlopillo.  
**STEERING**—Drop-link with Hydraulic Finger-Tip Controls.  
**INSTRUMENT PANELS (2)** with Tachometer, Ammeter, Oil, Water and Gas Gauges.  
**HORN**—Electric.  
**HARDWARE**—Chrome Plated. Lifting Rings, Cleats, Chocks, Sheer Mouldings, Running Lights, Step-Plates, Cabin and Deck Rails, Spotlight

## 18 FOOT UTILITY --- MODEL 18-100



NEW SHEPHERD UTILITY  
SPEEDS UP TO 40 M.P.H.

### EQUIPMENT

ENGINE—Direct Drive.

WINDSHIELD—Moulded Glass.

UPHOLSTERY—Tolex.

FLOOR COVERING—Linoleum.

SEAT CUSHIONS—Dunlopillo.

STEERING—Drog-link with Column Mounted Gear Shift and Throttle.

INSTRUMENT PANEL—With Tachometer, Oil, Water and Gas Gauges.

HORN—Electric.

HARDWARE—Chrome Plated. Lifting Rings, Cleats, Chocks, Sheer Mouldings.

Running Lights, Step-Plates.



# 18 FOOT UTILITY --- MODEL 18-100



NEW SHEPHERD 18-FOOT UTILITY, SPEEDS UP TO 40 M.P.H.

## SPECIFICATIONS

BEAM	6' 4"
MOULDED DEPTH	3' 8"
FREEBOARD—Fore and Aft	28½"-22"
BOTTOM—Double ½" Planked Mahogany	½"
SIDES—Batten-seamed Mahogany	½"
FUEL CAPACITY—Imperial Gallons	18
SEATING CAPACITY	5





## 18 FOOT VEE CONVERTIBLE MODEL 105

### SPECIFICATIONS

BEAM .....	6' 4"
MOULDED DEPTH .....	3' 6"
FREEBOARD—Fore and Aft .....	28½"-22"
BOTTOM—Double ½" Planked Mahogany .....	¾"
SIDES—Batten-seamed Mahogany .....	½"
FUEL CAPACITY—Imperial Gallons .....	18
SEATING CAPACITY .....	5

### EQUIPMENT

- ENGINE—Vee Drive with Reduction.
- WINDSHIELD—Moulded Glass.
- EXTRA—Convertible Top.
- UPHOLSTERY—Tolex.
- FLOOR COVERING—Linoleum.
- SEAT CUSHIONS—Dunlopillo.
- STEERING—Drag-link with Column Mounted Gear Shift and Throttle.
- INSTRUMENT PANEL—With Tachometer, Ammeter, Oil, Water and Gas Gauges.
- HORN—Electric.
- HARDWARE—Chrome Plated. Lifting Rings, Cleats, Chocks, Sheer Mouldings, Running Lights, Step-Plates.
- EXTRA—Convertible Top.



**18 FOOT VEE CONVERTIBLE  
MODEL 105**



NEW SHEPHERD 18-FOOT CONVERTIBLE, SPEEDS UP TO 44 M.P.H.

## 22 FOOT SPORTSMAN --- MODEL 110S



### SPECIFICATIONS

BEAM	7' 1"
MOULDED DEPTH	4' 5 1/2"
FREEBOARD—Fore and Aft	34 1/2"-24"
BOTTOM—Double 3/4" Planked Mahogany	1/2"
SIDES—Batten-seamed Mahogany	1/2"
FUEL CAPACITY—Imperial Gallons	27
SEATING CAPACITY with 1/2 Seat	8

### EQUIPMENT

- ENGINE—Direct Drive or V-Drive with Reduction.
- WINDSHIELD—Moulded Glass.
- UPHOLSTERY—Telex.
- FLOOR COVERING—Linoleum.
- SEAT CUSHIONS—Dunlopillo.
- STEERING—Drag-link with Column Mounted Gear Shift and Throttle.
- INSTRUMENT PANEL—With Tachometer, Ammeter, Oil, Water and Gas Gauges.
- HORN—Electric.
- HARDWARE—Chrome Plated. Lifting Rings, Cleats, Chocks, Sheer Mouldings, Running Lights, Step-Plates, Cut Water.
- EXTRA—Convertible Top.





22 FOOT SPORTSMAN --- MODEL 110-S



NEW SHEPHERD 22-FOOT SPORTSMAN, SPEEDS UP TO 40 M.P.H.

## 22 FOOT VEE UTILITY --- MODEL 22-110



NEW SHEPHERD 22-FOOT UTILITY, SPEEDS UP TO 40 M.P.H.

### SPECIFICATIONS

BEAM .....	7' 1"
MOULDED DEPTH .....	4' 5 1/2"
FREEBOARD—Fore and Aft .....	34 1/2"—24"
BOTTOM—Double 3/4" Planked Mahogany .....	3/4"
SIDES—Batten-seamed Mahogany .....	1/2"
FUEL CAPACITY—Imperial Gallons .....	27
SEATING CAPACITY .....	6

### EQUIPMENT

ENGINE—Direct Drive or Vee Drive with Reduction.  
 WINDSHIELD—Moulded Glass.  
 UPHOLSTERY—Tolex.  
 FLOOR COVERING—Linoleum.  
 SEAT CUSHIONS—Dunlopillo.  
 STEERING—Drag-link with Column Mounted Gear Shift and Throttle.  
 INSTRUMENT PANEL—With Tachometer, Ammeter, Oil, Water and Gas Gauges.  
 HORN—Electric.  
 HARDWARE—Chrome Plated. Lifting Rings, Cleats, Chocks, Sheer Mouldings, Running Lights, Step Plates, Cut Water.  
 EXTRA—Convertible Top.



## 22 FOOT CUSTOM SEDAN --- MODEL 140



NEW SHEPHERD 22-FOOT CUSTOM SEDAN, SPEEDS UP TO 40 M.P.H.

### SPECIFICATIONS

BEAM .....	7' 1"
MOULDED DEPTH .....	4' 5½"
FREEBOARD—Fore and Aft .....	34½"—24"
BOTTOM—Double ¾" Planked Mahogany .....	¾"
CABIN—Streamlined. 57" Head Room, Crank Lift Side Windows.	
FUEL CAPACITY—Imperial Gallons .....	27
SEATING CAPACITY .....	8

### EQUIPMENT

ENGINE—Vee Drive with Reduction.  
 WINDSHIELD—Full Vision, Moulded Corners.  
 FLOOR COVERINGS—Linoleum.  
 SEAT CUSHIONS—Dunlopillo.  
 STEERING—Drag-link with Column Mounted Gear Shift and Throttle.  
 INSTRUMENT PANEL—With Tachometer, Ammeter, Oil, Water and Gas Gauges.  
 HORN—Electric.  
 HARDWARE—Chrome Plated. Lifting Rings, Cleats, Checks, Sheer Mouldings, Running Lights, Step-Plates, Cut Water, Spotlight.  
 EXTRA—Hand Rails.



## 27 FOOT CUSTOM COMMUTER VEE - DRIVE



MODEL 130

### SPECIFICATIONS

BEAM	9' 4"
FREEBOARD—Fore and Aft	45"—34"
BOTTOM—Double 1/2" Planked Mahogany	1"
SIDES—Batten-seamed Mahogany	5/8"
FUEL CAPACITY—Imperial Gallons	60
SLEEPING CAPACITY	2 to 4
SEATING CAPACITY	10

### STANDARD EQUIPMENT

- ENGINES—2 Vee Drives with Reduction Hydraulic Control.
- WINDSHIELD—Full Vision, Moulded.
- UPHOLSTERY—Talex.
- FLOOR COVERING—Linoleum.
- SEAT CUSHIONS—Dunlopilla.
- STEERING—Drag-link with Hydraulic Finger-Tip Controls.
- INSTRUMENT PANELS (2) with Tachometer, Ammeter, Oil, Water and Gas Gauges.
- HORN—Electric.
- HARDWARE—Chrome Plated. Lifting Rings, Cleats, Chocks, Sheer Mouldings, Running Lights, Step-Plates, Cabin and Deck Rails, Spotlight.
- EXTRA—Convertible Top (IF AVAILABLE)



**27 FOOT CUSTOM COMMUTER  
VEE-DRIVE MODEL 130**

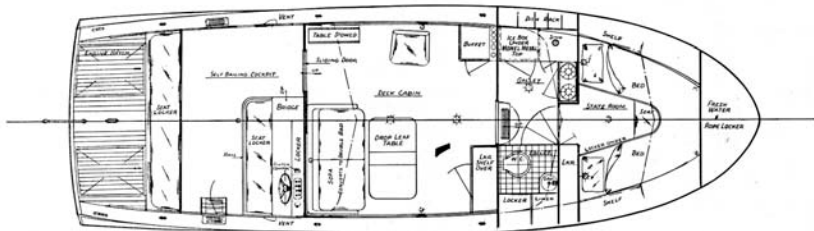
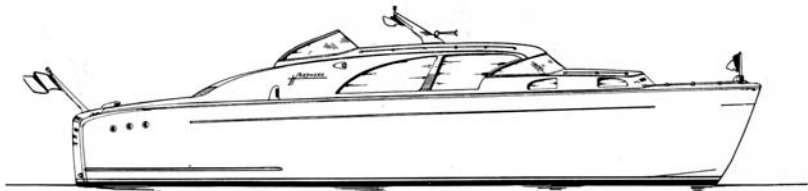


NEW SHEPHERD CUSTOM COMMUTER  
SPEEDS UP TO 38 M.P.H.





## SPORT CRUISERS --- TWIN VEE-DRIVE



MODEL 170

### EQUIPMENT

Anchor and Anchor Line.  
Electric Bilge Blower.  
Electric Line Pump.  
Dock Lines (2).  
Galley—Ice Box, Sink, Stove, Dish-rack and Stowage Locker.  
Telex Engine Control (Hydraulic).  
Hand Operated Toilet, Porcelain Wash Basin.

Chrome Plated Hardware, including: Cleats, Chocks, Step-plates, Cabin and Deck Hand-rails, Sheer Mouldings, Running Lights, Bow and Stern Flag-poles, Electric Horn, Stern and Bow Bits.

Linoleum Floor Covering throughout.  
Motor Compartment Insulated.  
Window Screens.  
Cabin Lights.  
Fly Top available as Extra Equipment.

# *Shepherd Boats*

NIAGARA-ON-THE-LAKE WHERE "CANADA BEGAN"

ALL MODEL, SPECIFICATIONS AND EQUIPMENT  
SUBJECT TO CHANGE WITHOUT NOTICE.